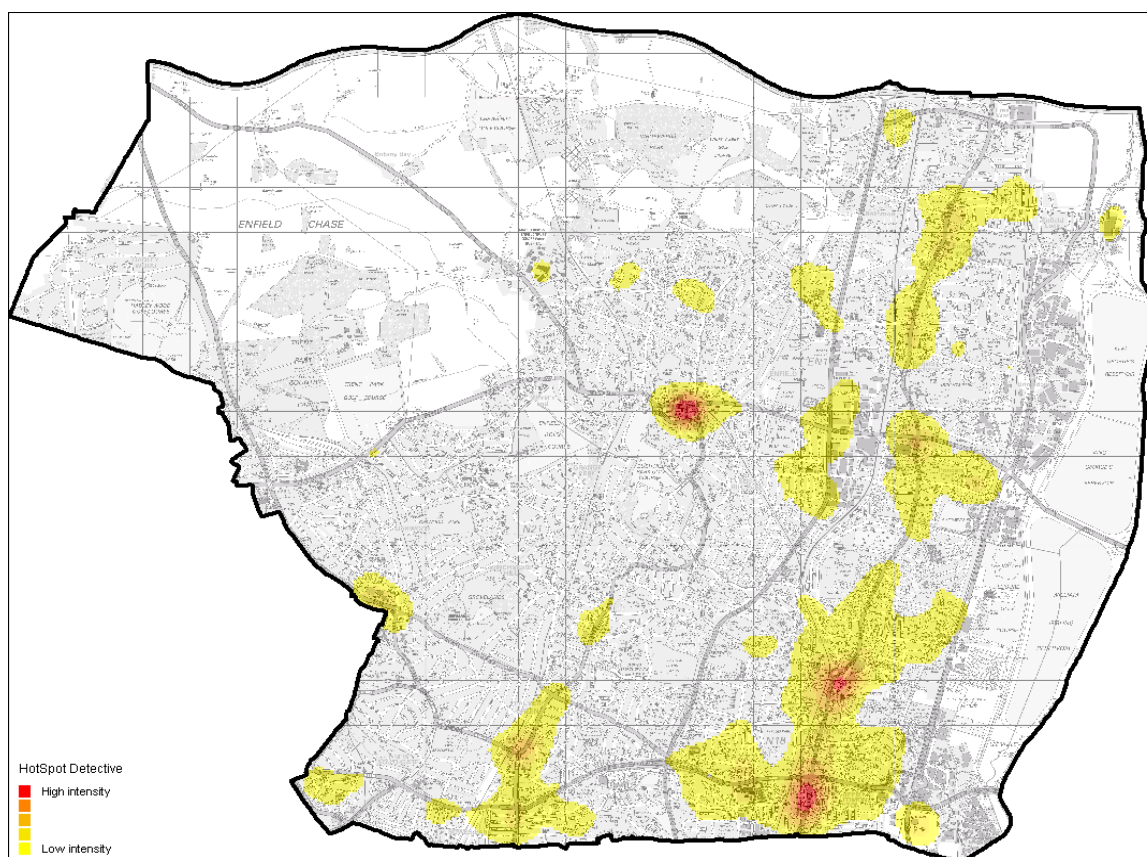


Crime and Anti-Social Behaviour Profile

London Borough of Enfield 2008/09



Above: Enfield Crime Hotspots 2008/09

In the last year the number of violent crimes (-2.0%), robberies (-10.0%), motor vehicle crimes (-7.6%) and overall recorded crimes (-3.4%) have fallen in Enfield. In the same period however there has been an increase in burglary (+9.7%). Rates of crime in Enfield are generally below the Greater London average. Violence against the person, robbery, motor vehicle crime, other theft and handling, criminal damage and other crime not listed elsewhere (for example fraud or forgery and sexual offences) all have rates lower than the Greater London average. Burglary is the only offence category showing a higher rate. The total crime rate of Enfield in 2008/09 was 86.2 per 1,000 residents compared to 112.6 across Greater London.

Anti-social behaviour incidents in Enfield also decreased (-3.9%) over the past year including reductions in abandoned vehicles (-29.5%), deliberate and malicious fires (-8.1%) and overall ASB calls made to police (-1.3%). Across the borough 33% of residents perceived ASB to be a big or fairly big problem in their local area.

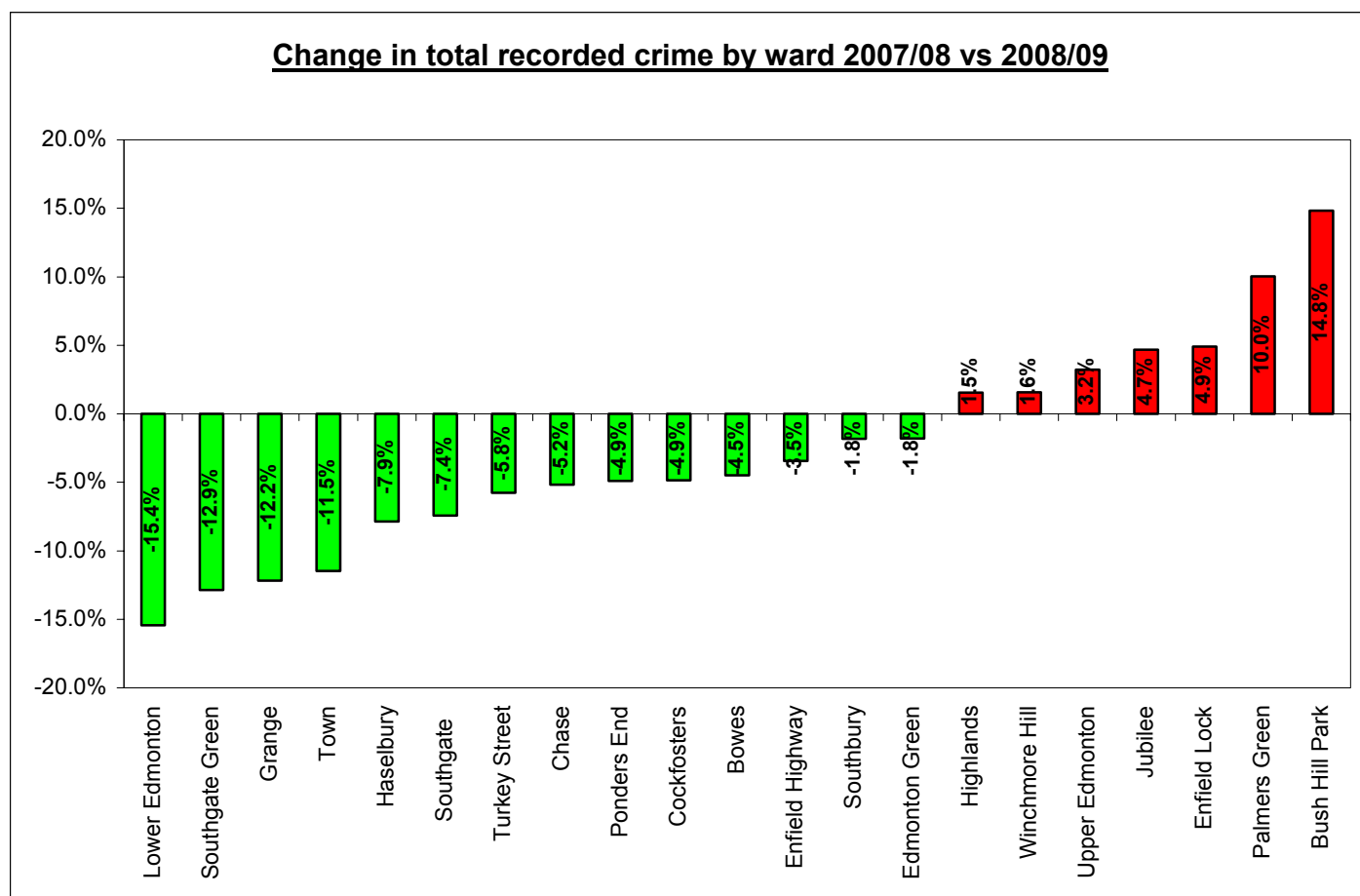
Crime Overview 2008-09

Enfield	Violence Against the Person	Robbery	Burglary	Theft of and from Motor Vehicles	Other Theft & Handling	Criminal Damage	Drugs*	Other Crime Not Listed Elsewhere	Total Offences	Serious Acquisitive Crime**
2008-09	4,235	1,141	3,984	4,068	3,835	3,521	2,130	1,620	24,534	8,259
2007-08	4,320	1,268	3,633	4,402	4,347	3,670	2,375	1,362	25,398	8,126
2006-07	5,342	1,507	3,638	4,176	4,885	3,741	2,099	1,670	27,058	8,050
2005-06	5,256	1,454	3,844	4,297	5,406	3,946	1,171	2,099	27,473	8,184
2004-05	5,190	1,143	3,528	4,852	5,931	4,278	553	2,646	28,131	8,250
Performance 2008-09 vs 2007-08	-2.0%	-10.0%	9.7%	-7.6%	-11.8%	-4.1%	-10.3%	18.9%	-3.4%	1.6%
Performance 2008-09 vs 2004-05	-18.4%	-0.2%	12.9%	-16.2%	-35.3%	-17.7%	285.2%	-38.8%	-12.8%	0.1%

Enfield (Rate per 1,000 residents 2008/09)	Violence Against the Person	Robbery	Burglary	Theft of and from Motor Vehicles	Other Theft & Handling	Criminal Damage	Drugs*	Other Crime Not Listed Elsewhere	Total Offences	Serious Acquisitive Crime**
Enfield	14.3	4.0	14.0	14.6	13.1	12.4	7.5	5.6	86.2	29.3
London	22.5	4.3	12.5	15.0	26.8	12.7	10.1	8.6	112.6	27.2

*Owing to changes in legislation and the way drugs offences are dealt with, yearly figures are incomparable

**This includes robbery, household burglary and thefts of and from motor vehicles - this figures are included within the Robbery, Burglary and Theft & Handling columns also

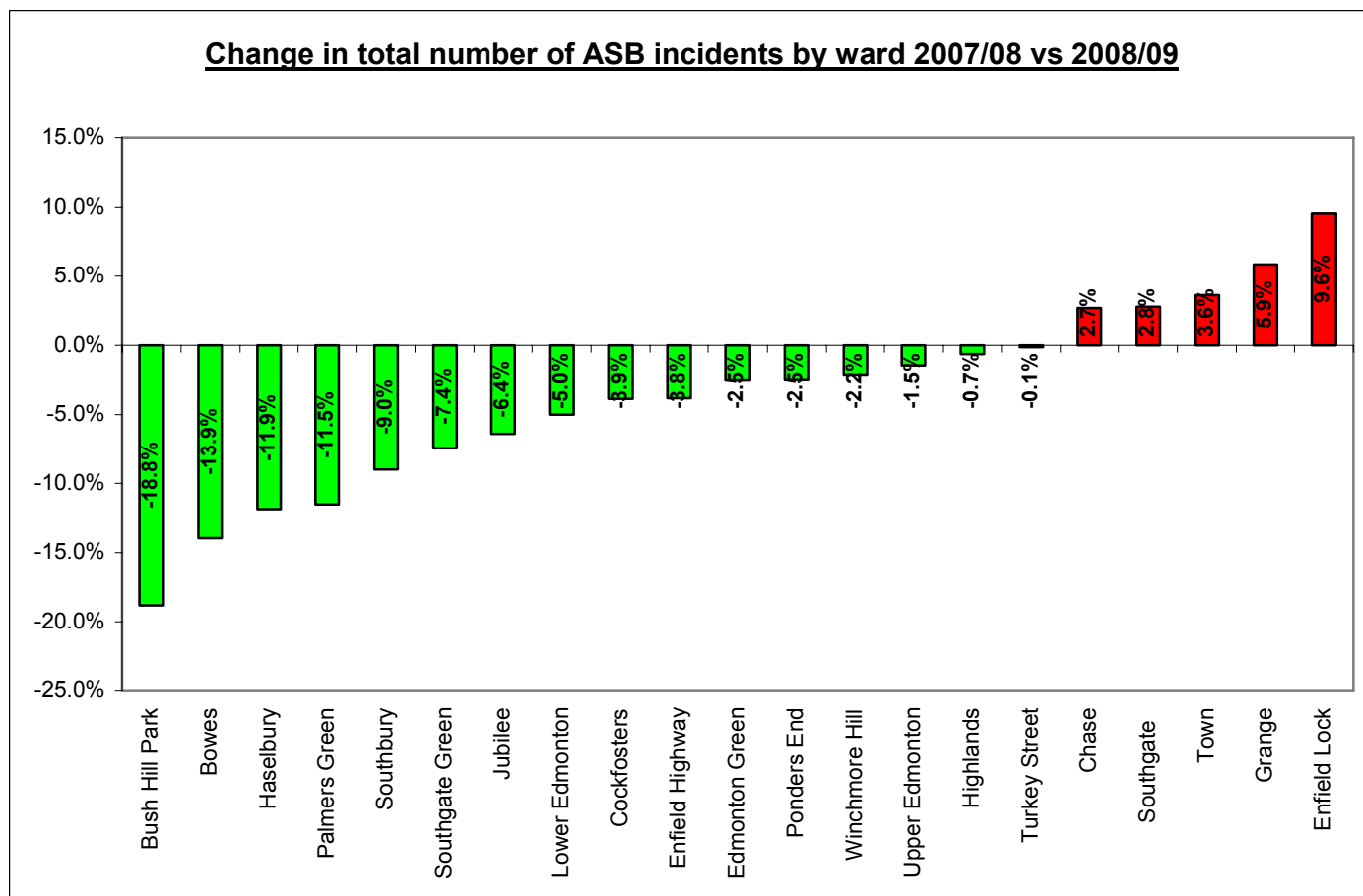


Anti-social Behaviour Overview 2008-09¹

Enfield	Abandoned Vehicles (Enviro-Crime)	Fly-tipping and dumped rubbish (Enviro-Crime)	Alcohol related calls (London Ambulance Service)	Deliberate & Malicious Fires (London Fire Brigade)	Drugs & Substance Misuse Calls (Police ASB)	Intimidation & Harassment Calls (Police ASB)	Noisy & Nuisance Neighbours Calls (Police ASB)	Rowdy & Inconsiderate Behaviour Calls (Police ASB)	Overall Anti-social Behaviour Calls to Police (Police ASB)*	Total Anti-Social Behaviour**
2008-09	1,589	8,730	1,655	508	1,184	1,107	1,153	8,745	20,969	31,862
2007-08	2,255	9,719	1,641	553	965	1,055	1,070	9,271	21,239	33,152
2006-07	2,985	6,100	1,334	703	712	948	2,028	10,333	22,903	31,040
2005-06	3,353	8,446	1,418	702	504	869	2,980	9,159	22,365	32,931
2004-05	4,514	6,419	1,445	822	556	820	2,898	9,668	22,480	31,166
Performance 2008-09 vs 2007-08	-29.5%	-10.2%	0.9%	-8.1%	22.7%	4.9%	7.8%	-5.7%	-1.3%	-3.9%
Performance 2008-09 vs 2004-05	-64.8%	36.0%	14.5%	-38.2%	112.9%	35.0%	-60.2%	-9.5%	-6.7%	2.2%

*This includes the police ASB figures from the four preceding columns (Drugs & Substance Misuse, Intimidation & Harassment, Noisy & Nuisance Neighbours and Rowdy & Inconsiderate Behaviour)

**This is the combined total of the Abandoned Vehicles, Fly-tipping and dumped rubbish, Alcohol-related calls, Deliberate & Malicious Fires and Overall Anti-social Behaviour Calls to Police columns



¹ Figures for other London Boroughs were not obtainable therefore it was not possible to do comparisons. Furthermore, changes in the recording of fly tipping including more pro-active reports means longer terms changes for this measure are somewhat incomparable.

Perceptions of Crime and ASB 2009²

Survey Question	Enfield
Feelings of Safety	
% People who felt fairly unsafe or very unsafe after dark in their local area	40
% People who felt fairly unsafe or very unsafe during the day in their local area	10
% People who felt crime/ASB had gotten worse in their local area	41
Perceptions of Anti-social Behaviour	
% People who perceive noisy neighbours or loud parties a problem in their local area	14
% People who perceive vandalism, graffiti and criminal damage a problem in their local area	35
% People who perceive others being attacked because of their skin colour, nationality, religion a problem in their local area	18
% People who perceive using or dealing of drugs a problem in their local area	39
% People who perceive others being drunk or rowdy in public a problem in their local area	28
% People who perceive rubbish and litter lying around as a problem in their local area	55
% People who perceive abandoned or burnt out cars as a problem in their local area	15
% People overall perception that ASB is a problem in their local area	33
% People agree that police and local services are successfully dealing with crime and anti-social behaviour in their local area	34
What should be the top priority in your local area?	
Dealing with gun and knife related offences	35
Encouraging young people away from crime	35
Reducing violent crime and assaults	30
Dealing with domestic burglary	30
Dealing with ASB	25
Cutting drug and substance misuse/dealing	25

Data Sources Used:

- Crime overview figures for wards come from the London Analyst Support Site.
- Crime overview figures for Enfield and the Metropolitan Police come from the Metropolitan Police official website (<http://maps.met.police.uk/tables.htm>)
- Population figures used to establish crime rates come from the GLA population projections for 2008. Local information on these statistics can be found at Enfield Observatory (<http://www.enfield-observatory.org.uk/stats/stats.asp>)
- ASB overview figures for abandoned vehicles and fly-tipping come from the council Enviro-Crime Unit
- ASB overview figures for alcohol related calls and deliberate and malicious fires are obtained via the London Analyst Support Site
- ASB overview figures for police ASB categories are from the Metropolitan Police. Local data on ASB is now available from the official Metropolitan Police website (<http://maps.met.police.uk/access.php>)
- Survey data used was from the local "Place Survey". More information on the place survey and the results by local areas can be found on the Communities and Local Government website (<http://www.communities.gov.uk/publications/corporate/statistics/placesurvey2008>)

² Research conducted by Ipsos Mori between February and April 2009. There were approximately 100 respondents from each of Enfield's 21 council wards.